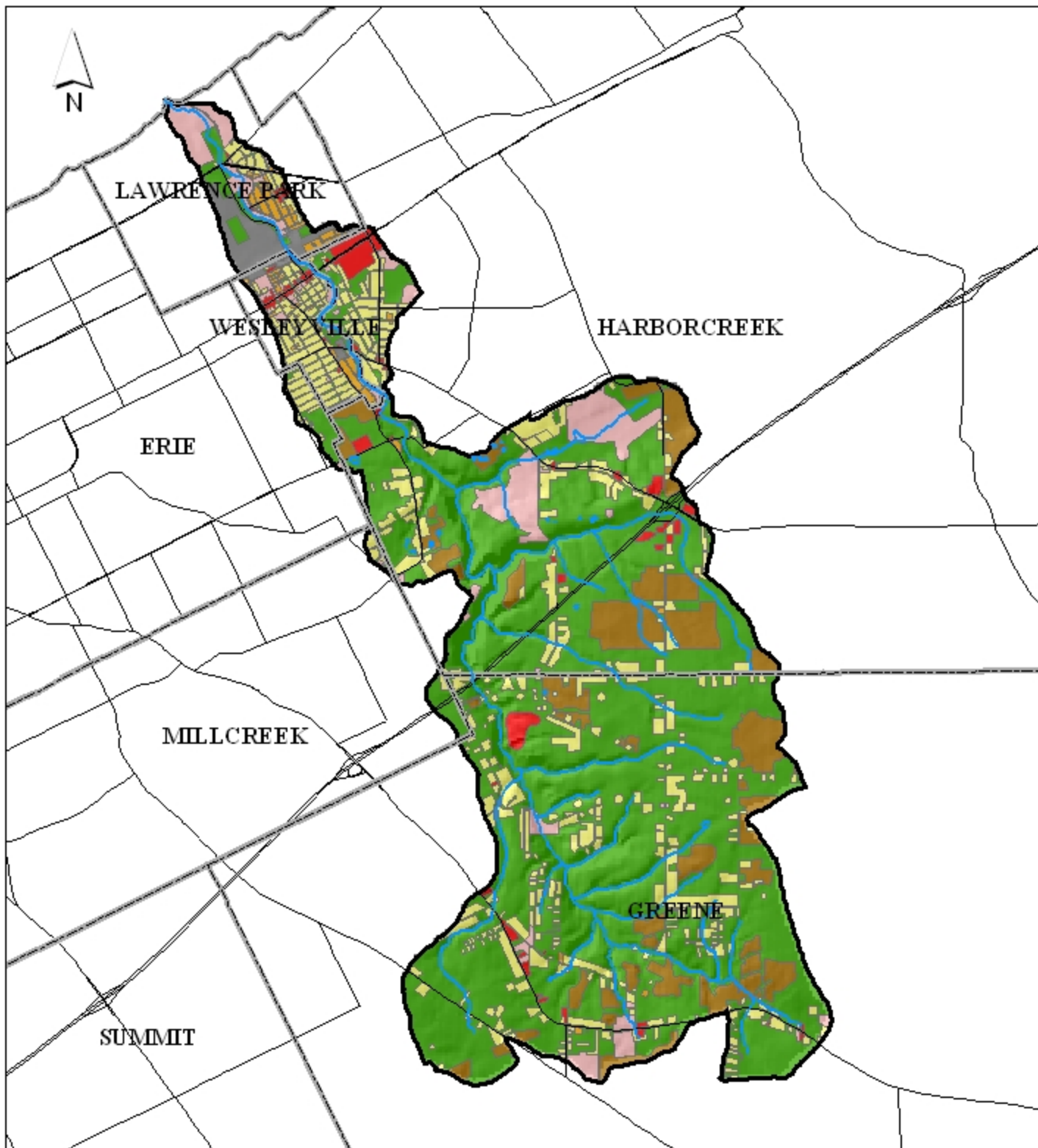


# Fourmile Creek Watershed Land Use



## Legend

- Fourmile Creek
- Municipalities
- Fourmile Creek Watershed (12.00 sq mi)
- Roads
- Public/Insitutional (5.75%)
- Open/Wooded (63.25%)
- Medium Density Residential (1.17%)
- Low Density Residential (15.33%)
- Industrial (1.67%)
- Commercial (2.00%)
- Agriculture (10.83%)

0 0.25 0.5 1 1.5 2 Miles